

Gibbens Drake Scott Inc.

Quarterly Coverage

Featuring Jeff Kling PE ME



Gibbens Drake Scott Inc couples experience with passion in their mechanical design. Read below to see Jeff Kling highlight one of his favorite projects.



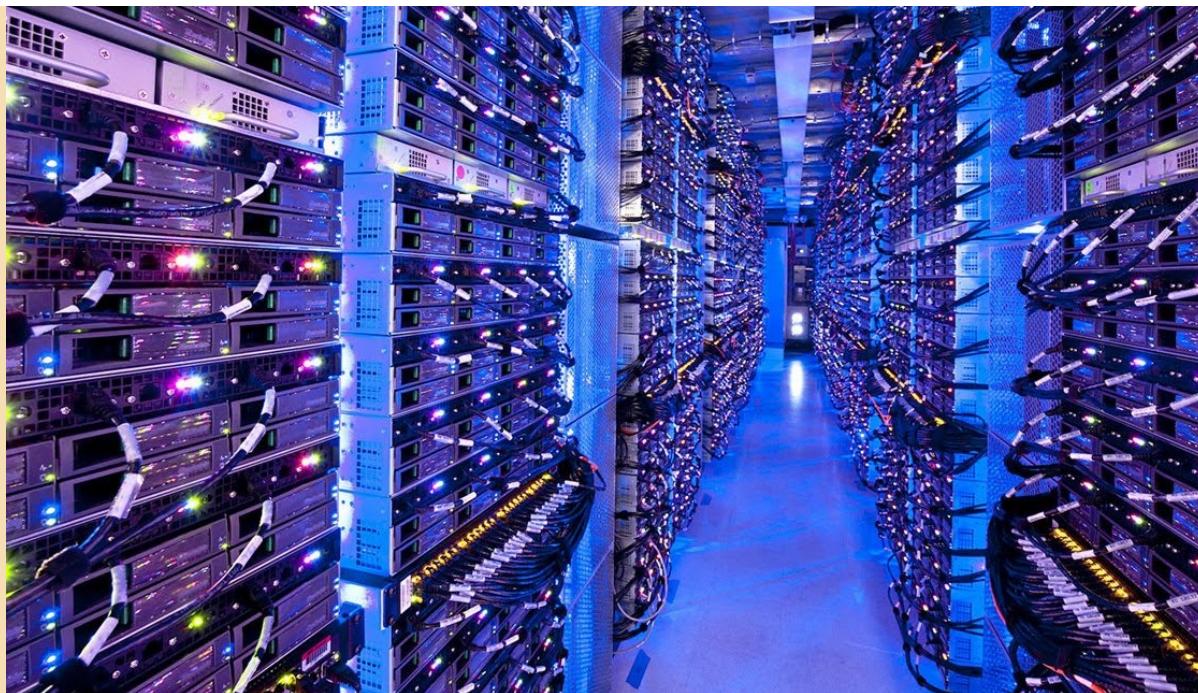
Confidential Client - Data Center Dallas Texas

*452,000 square feet / total chiller plant 10,680
Tons with N+1 equipment arrangement*

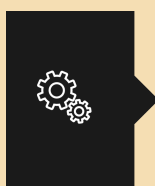


Thank you for taking interest in our Quarterly Coverage. My name is Jeff Kling and I just wanted to articulate my experience from the past several years of working on this World Class data center and recapitulate the hard work that has been put in by the entire team.

This facility has been thrilling to me because of the scale it possesses. The required depth of understanding for the mechanical and electrical systems employed approaches an apex of engineering design, which is one of the greatest internal motivators in the engineering profession. Systems of this size have unique requirements beyond their smaller comparisons. Throughout the project, discussion of the interior space considerations included the theoretical shifting of school bus sized equipment. Concerns of access, maintenance, and replacement have been continual. The facility is adapted for both the necessary and extraordinary which, when deployed, will elevate it to a quality comparative model.



The facility has presented opportunities and challenges through the reuse of an existing cooling plant. The existing framework and utilities are robust, however existing conditions did not lend it to easily locating all of the new equipment. The development of the center design has resulted in phased construction, so elements of today's design were considered nearly three years ago.



Our team designed the mechanical cooling chiller plant layout at each iteration, assisted with building piping network, and air side equipment design, designed the water and plumbing services, assisted with mechanical equipment selection, and with the fire protection design.

The project began in 2013 will be nearly 50% complete by the end of 2016. Our design team has possessed great collaborative personalities that I continue to enjoy being a member of.

Jeff Kling PE ME – LEED AP BD+C – KC ASPE President - With GDS since 2007



Tim Scott PE BSEE



Jay Guerra PE BSEE



Todd Atkins PE BSME

[Contact us today](#)